



### CARVED BLACK

CODE	SIZE	SUGG BASE
<b>ACC31A-K</b>	5 1/4" X 6"	ACKB2
<b>ACC31B-K</b>	5 5/8" X 6 1/2"	ACKB3
<b>ACC31C-K</b>	6" X 7"	ACKB3

### PEAKED SHIELD

CODE	SIZE	SUGG BASE
<b>43836-K</b>	4 3/4" X 6"	ACKB3
<b>43837-K</b>	5 5/8" X 7"	ACKB3
<b>43838-K</b>	6 1/2" X 8"	ACKB4



### FAN

CODE	SIZE	SUGG BASE
<b>42036-K</b>	5 1/4" X 6"	ACKB2
<b>42037-K</b>	5 1/2" X 7"	ACKB2
<b>42038-K</b>	5 3/4" X 8"	ACKB3

### HORIZONTAL OVAL

CODE	SIZE	SUGG BASE
<b>44446-K</b>	3 3/4" X 6"	ACKB3
<b>44457-K</b>	4 3/4" X 7"	ACKB4
<b>44468-K</b>	5 3/4" X 8"	ACKB4



### ACRYLIC REFLECTIONS

CODE	SIZE
ACC32A-KB	8"
ACC32B-KB	10"
ACC32C-KB	12"

### ACRYLIC REFLECTIONS

CODE	SIZE
ACC33A-KB	9"
ACC33B-KB	10"
ACC33C-KB	11"

### ACRYLIC FREEFORM

CODE	SIZE
ACC41A-B	11"
ACC41B-B	13"

Available March 30/09



### FLARED ARCH

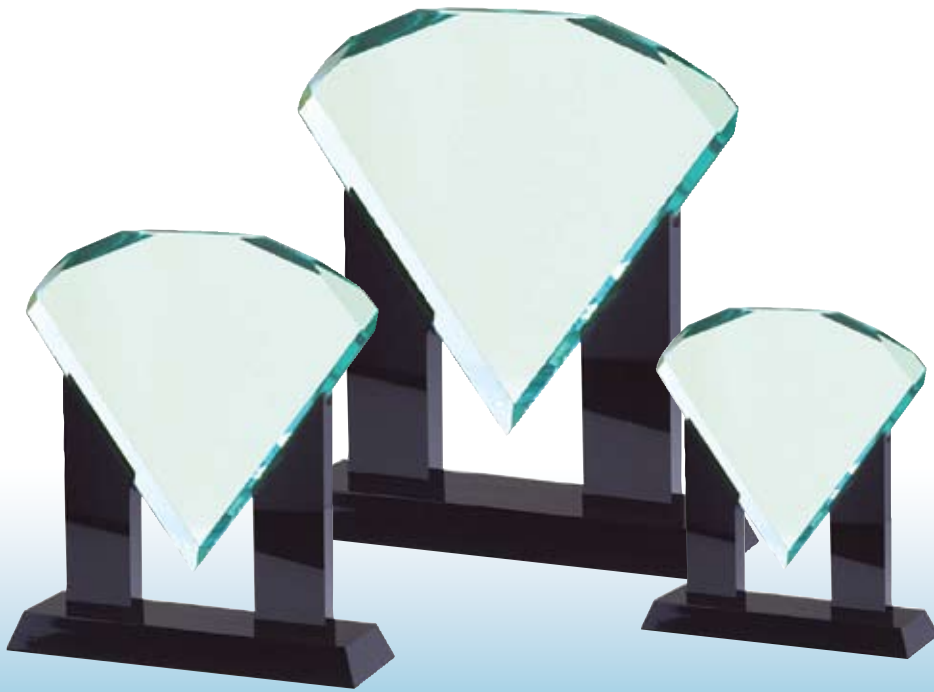
CODE	SIZE	SUGG BASE
ACC02A-B	7"	ACCB2
ACC02B-B	8"	ACCB2
ACC02C-B	9"	ACCB3

### FLARED CIRCLE

CODE	SIZE	SUGG BASE
ACC24A-B	5" X 3"	ACCB3
ACC24B-B	5" X 3 3/4"	ACCB4
ACC24C-B	6" X 4 1/8"	ACCB4

### TAPERED FAN

CODE	SIZE	SUGG BASE
ACC10A-B	7 3/4"	ACCC3
ACC10B-B	8 3/4"	ACCC3
ACC10C-B	9 3/4"	ACCC3



### DIAMOND ACRYLIC AWARDS

This beauty is designed with its own black acrylic base which gracefully holds the Diamond as if raised on a pedestal. The Diamond is offered in jade. The Diamond Acrylic Awards are 3/4" thick and are offered in three different sizes from 9" to 11".

#### JADE DIAMOND

CODE	HEIGHT
ACJK01AA	9"
ACJK01A	10 1/2"
ACJK01B	11 3/4"



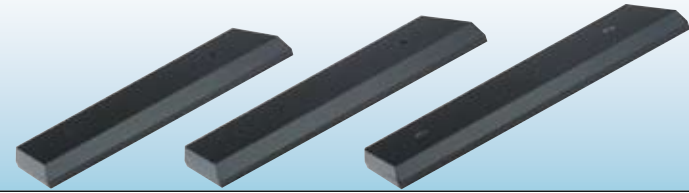
#### CRACKED ICE

CODE	SIZE	SUGG BASE
ACC18B-B	5" X 6 1/4"	ACKB3
ACC18C-B	6 1/4" X 7 1/2"	ACKB4

This line combines an art deco design with the weight and substance of metal for a truly beautiful award to recognize achievement.

**PHOENIX BLACK ACRYLIC BASES**

PREDRILLED HOLES TO MAKE MOUNTING OF SIDES A SNAP!



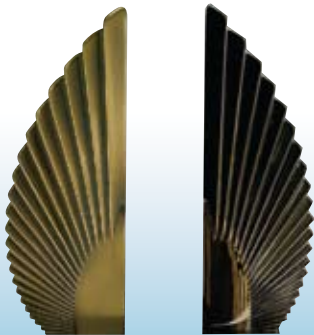
**ACKB5**  
9" X 3"

**ACKB6**  
10" X 3"

**ACKB7**  
11" X 3"

**PHOENIX METAL SIDES**  
2 REQUIRED PER AWARD

**MOUNTING HARDWARE**  
FOR PHOENIX SIDES



**12003-G**  
6" X 2"  
ANTIQUE GOLD

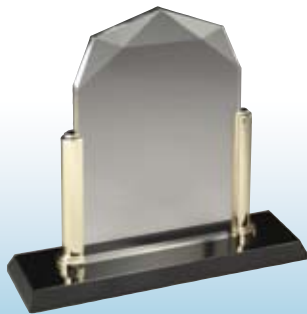
**12003-K**  
6" X 2"  
BLACK CHROME



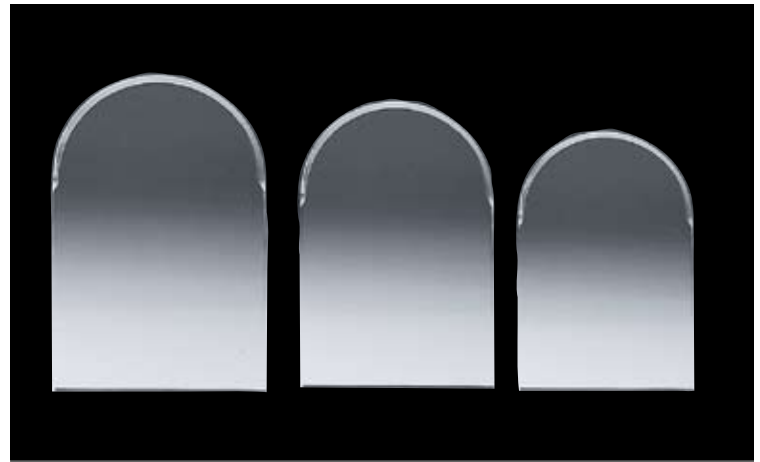
This specialized mounting hardware is included with each metal side set



**12002-G**  
1/2" X 5"



The moulded 12002-G sides may be substituted for the phoenix metal sides to create a different price point



**ARCH**

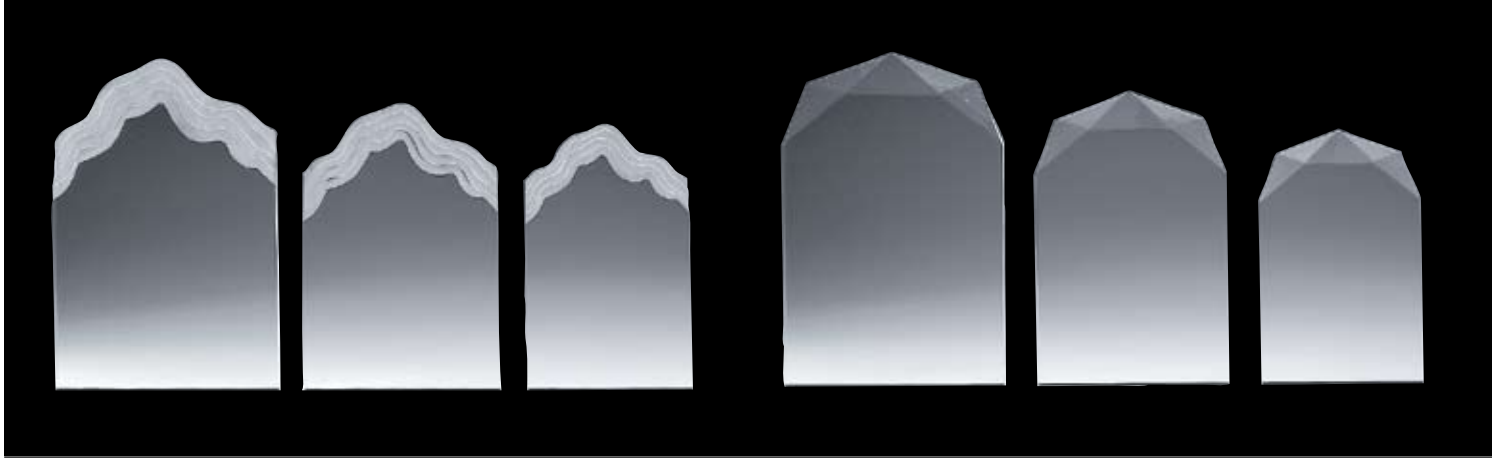
**12279**  
7" X 9 1/4"

**12268**  
6" X 8 1/4"

**12257**  
5" X 7 1/2"



**Example of Assembled Rounded Arch Award with Black Chrome Sides**



### WAVE

**12579**  
7" X 10"

**12568**  
6" X 8 1/2"

**12557**  
5" X 7 1/2"

### DIAMOND

**12479**  
7" X 10"

**12468**  
6" X 8 1/2"

**12457**  
5" X 7 1/2"



**Example of Assembled Wave Award  
with Antique Gold Sides**



**Example of Assembled Diamond Award  
with Black Chrome Sides**



JADE TABLET

CODE	SIZE	SUGG. BASE
ACJ25A	3 1/2" X 5"	ACJB3
ACJ25B	4" X 6"	ACJB4
ACJ25C	4 3/4" X 7"	ACJB4

JADE FLARED CIRCLE

CODE	SIZE	SUGG. BASE
ACJ24A	3 3/4" X 5"	ACJB3
ACJ24B	4" X 6 1/4"	ACJB4
ACJ24C	5" X 7"	ACJB4

ENGRAVING IS FOR ILLUSTRATION ONLY AND NOT INCLUDED IN PRICE



JADE MAPLE LEAF

CODE	SIZE	SUGG. BASE
ACJ27A	5 3/8" X 6"	ACJB2
ACJ27B	5 3/4" X 7"	ACJB2
ACJ27C	6" X 8"	ACJB3

JADE ICEBERG MOUNTAIN

CODE	SIZE	SUGG. BASE
ACJ23A	5 1/2" X 8 1/2"	ACJB3
ACJ23B	5 3/4" X 10"	ACJB3
ACJ23C	6" X 11 1/4"	ACJB3

JADE HEART

CODE	SIZE
44655-J	5"
44666-J	6"
44677-J	7"



### JADE JEWEL

CODE	SIZE	SUGG BASE
ACJ05A	4 3/4" X 5 3/4"	ACJB2
ACJ05B	5 1/2" X 6 1/4"	ACJB3
ACJ05C	6" X 7 1/8"	ACJB3

### JADE OVAL-VERTICAL

CODE	SIZE	SUGG BASE
ACJ19A	4 1/4" X 6"	ACJB2
ACJ19B	5" X 7"	ACJB2
ACJ19C	5 1/2" X 8"	ACJB3

### JADE DIAMOND

CODE	SIZE	SUGG BASE
ACJ16A	4 1/2" X 6"	ACJB2
ACJ16B	5" X 7"	ACJB2
ACJ16C	5 1/4" X 8"	ACJB3

## ASK ABOUT OUR LASER ENGRAVING SERVICES



### JADE FLAME

CODE	SIZE	SUGG BASE
ACJ12A	3 3/8" X 7"	ACJB1
ACJ12B	4 3/8" X 9"	ACJB2
ACJ12C	7" X 10 3/8"	ACJB3

### JADE WAVE

CODE	SIZE	SUGG BASE
ACJ15A	3 1/8" X 6"	ACJB2
ACJ15B	3 3/8" X 7"	ACJB2
ACJ15C	3 3/4" X 8"	ACJB3

### JADE ICEBERG

CODE	SIZE	SUGG BASE
ACJ17A	4" X 5"	ACJB2
ACJ17B	5" X 6"	ACJB3
ACJ17C	6" X 7"	ACJB3

**JADE WING**

CODE	SIZE	SUGG BASE
ACJ28A	5" X 7"	ACJB2
ACJ28B	5 1/2" X 8"	ACJB2
ACJ28C	6" X 9"	ACJB3

**JADE SABRE**

CODE	SIZE	SUGG BASE
ACJ03A	4 1/4" X 8 1/4"	ACJB2
ACJ03B	4 7/8" X 9 3/4"	ACJB3
ACJ03C	5 3/8" X 11 1/8"	ACJB3

**JADE PEAK**

CODE	SIZE	SUGG BASE
ACJ07A	3 1/4" X 6"	ACJB2
ACJ07B	3 3/8" X 7"	ACJB2
ACJ07C	3 5/8" X 8"	ACJB3

**ASK ABOUT OUR LASER ENGRAVING SERVICES****JADE OCTAGON**

CODE	SIZE	SUGG BASE
ACJ04A	6" X 6"	ACJB3
ACJ04B	7" X 7"	ACJB3
ACJ04C	8" X 8"	ACJB4

**JADE OVAL-HORIZONTAL**

CODE	SIZE	SUGG BASE
ACJ21A	3 3/4" X 6"	ACJB2
ACJ21B	4 3/4" X 7"	ACJB3
ACJ21C	5 3/4" X 8"	ACJB4



### JADE FACETED RECTANGLE

CODE	SIZE	SUGG BASE
<b>ACJ26A</b>	3 1/2" X 5"	1" THICK
<b>ACJ26B</b>	4 2/4" X 6"	NO BASE REQUIRED
<b>ACJ26C</b>	5" X 7"	REQUIRED

### JADE RECTANGLE

CODE	SIZE	SUGG BASE
<b>ACJ08A</b>	3 1/2" X 3 1/2"	ACJB2
<b>ACJ08B</b>	3 1/2" X 4 3/4"	ACJB2
<b>ACJ08C</b>	3 1/2" X 5 1/2"	ACJB2

## ASK ABOUT OUR LASER ENGRAVING SERVICES



### JADE OBELISK

CODE	SIZE	SUGG BASE
<b>ACJ20A</b>	3 3/8" X 5 3/4"	ACJB2
<b>ACJ20B</b>	3 7/8" X 8"	ACJB2
<b>ACJ20C</b>	4 1/8" X 9 1/8"	ACJB3

### JADE BEVELED ANGLES

CODE	SIZE	SUGG BASE
<b>ACJ37A</b>	6"	ACCB2
<b>ACJ37B</b>	7"	ACCB2
<b>ACJ37C</b>	8"	ACCB3

### JADE RAINBOW

CODE	SIZE	SUGG BASE
<b>ACJ38A</b>	5" X 7"	ACJR3
<b>ACJ38B</b>	6" X 7 1/2"	ACJR3
<b>ACJ38C</b>	7" X 8 1/2"	ACJR4

**CLEAR PYRAMID**

CODE	SIZE	IDEAL BASE
<b>ACC01A</b>	4" X 6"	ACCB2
<b>ACC01B</b>	5" X 7"	ACCB3
<b>ACC01C</b>	6" X 8"	ACCB4

**CLEAR PEAK**

CODE	SIZE	SUGG BASE
<b>ACC22A</b>	3 1/4" X 6"	ACCB2
<b>ACC22B</b>	3 3/8" X 7"	ACCB2
<b>ACC22C</b>	3 5/8" X 8"	ACCB3

**CLEAR JEWEL**

CODE	SIZE	SUGG BASE
<b>ACC05A</b>	4 3/4" X 5 3/4"	ACCB2
<b>ACC05B</b>	5 1/2" X 6 1/4"	ACCB3
<b>ACC05C</b>	6" X 7 1/8"	ACCB3

**ASK ABOUT OUR LASER ENGRAVING SERVICES****SANDPIPER CLEAR**

CODE	SIZE	SUGG BASE
<b>ACC40A</b>	4 1/2" X 6"	ACCB2
<b>ACC40B</b>	5" X 7"	ACCB3
<b>ACC40C</b>	6" X 8"	ACCB3

**BEVELED ANGLES**

CODE	SIZE	SUGG BASE
<b>ACC37A</b>	6"	ACCB2
<b>ACC37B</b>	7"	ACCB3
<b>ACC37C</b>	8"	ACCB3

**ANGLED OVAL**

CODE	SIZE	SUGG BASE
<b>ACC36A</b>	6" X 4"	ACCB2
<b>ACC36B</b>	7" X 4.5"	ACCB3
<b>ACC36C</b>	8" X 5"	ACCB3



### TORPEDO

CODE	SIZE
GI00002	7" X 11"

### QUESTAR

CODE	SIZE
GI00005	7" X 11"
GI00004	7" X 10"

## ASK ABOUT OUR LASER ENGRAVING SERVICES



### SUMMIT

CODE	SIZE	SUGG BASE
ACC11A-KG	6" X 8"	NO BASE
ACC11B-KG	7" X 9"	REQUIRED

### SHOOTING STAR

CODE	SIZE	SUGG BASE
ACC35A	6 3/4"	ACCB2
ACC35B	7 3/4"	ACCB3
ACC35C	8 3/4"	ACCB3

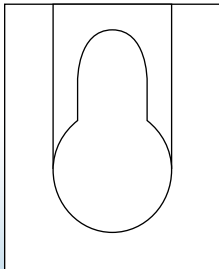


**BLOCK**

CODE	SIZE
ACC06A	4" X 6" X 1"
ACC06B	5" X 7" X 1"

**MARBLEIZED ACRYLIC STAND-UP AWARDS**

CODE	SIZE
ACC30A-B	4" X 6" X 1"
ACC30B-B	5" X 7" X 1"



**ACRYLIC PLAQUE HANGER**

CODE
ACHANGER

**CLEAR STAR WEDGE**

CODE	SIZE	NO BASE REQUIRED
ACC09B	2 1/2" X 7"	REQUIRED

**BLACK STAR WEDGE**

CODE	SIZE	NO BASE REQUIRED
ACC09B-K	2 1/2" X 7"	REQUIRED

	<p style="text-align: center;"><b>CLEAR BEVELED ACRYLIC BASE</b></p> <table border="1"> <thead> <tr> <th>CODE</th> <th>SIZE</th> <th>CODE</th> <th>SIZE</th> </tr> </thead> <tbody> <tr> <td><b>ACCB1</b></td> <td>2" X 4"</td> <td><b>ACCB3</b></td> <td>2 1/2" X 6"</td> </tr> <tr> <td><b>ACCB2</b></td> <td>2" X 5"</td> <td><b>ACCB4</b></td> <td>2 1/2" X 8"</td> </tr> </tbody> </table> <p style="text-align: center;">BEVELLED EDGES 3/4" THICK</p>	CODE	SIZE	CODE	SIZE	<b>ACCB1</b>	2" X 4"	<b>ACCB3</b>	2 1/2" X 6"	<b>ACCB2</b>	2" X 5"	<b>ACCB4</b>	2 1/2" X 8"
CODE	SIZE	CODE	SIZE										
<b>ACCB1</b>	2" X 4"	<b>ACCB3</b>	2 1/2" X 6"										
<b>ACCB2</b>	2" X 5"	<b>ACCB4</b>	2 1/2" X 8"										
	<p style="text-align: center;"><b>CLEAR COVE ACRYLIC BASE</b></p> <table border="1"> <thead> <tr> <th>CODE</th> <th>SIZE</th> </tr> </thead> <tbody> <tr> <td><b>ACCC3</b></td> <td>2 1/2" X 6"</td> </tr> </tbody> </table> <p style="text-align: center;">COVE EDGE 3/4" THICK</p>	CODE	SIZE	<b>ACCC3</b>	2 1/2" X 6"								
CODE	SIZE												
<b>ACCC3</b>	2 1/2" X 6"												
	<p style="text-align: center;"><b>JADE ELLIPTICAL ACRYLIC BASE</b></p> <table border="1"> <thead> <tr> <th>CODE</th> <th>SIZE</th> <th>CODE</th> <th>SIZE</th> </tr> </thead> <tbody> <tr> <td><b>ACJR1</b></td> <td>2" X 4"</td> <td><b>ACJR3</b></td> <td>2 1/2" X 6"</td> </tr> <tr> <td><b>ACJR2</b></td> <td>2" X 5"</td> <td><b>ACJR4</b></td> <td>2 1/2" X 8"</td> </tr> </tbody> </table> <p style="text-align: center;">ELLIPTICAL EDGES 3/4" THICK</p>	CODE	SIZE	CODE	SIZE	<b>ACJR1</b>	2" X 4"	<b>ACJR3</b>	2 1/2" X 6"	<b>ACJR2</b>	2" X 5"	<b>ACJR4</b>	2 1/2" X 8"
CODE	SIZE	CODE	SIZE										
<b>ACJR1</b>	2" X 4"	<b>ACJR3</b>	2 1/2" X 6"										
<b>ACJR2</b>	2" X 5"	<b>ACJR4</b>	2 1/2" X 8"										
	<p style="text-align: center;"><b>JADE BEVELED ACRYLIC BASE</b></p> <table border="1"> <thead> <tr> <th>CODE</th> <th>SIZE</th> <th>CODE</th> <th>SIZE</th> </tr> </thead> <tbody> <tr> <td><b>ACJB1</b></td> <td>2" X 4"</td> <td><b>ACJB3</b></td> <td>2 1/2" X 6"</td> </tr> <tr> <td><b>ACJB2</b></td> <td>2" X 5"</td> <td><b>ACJB4</b></td> <td>2 1/2" X 8"</td> </tr> </tbody> </table> <p style="text-align: center;">BEVELLED EDGES 3/4" THICK</p>	CODE	SIZE	CODE	SIZE	<b>ACJB1</b>	2" X 4"	<b>ACJB3</b>	2 1/2" X 6"	<b>ACJB2</b>	2" X 5"	<b>ACJB4</b>	2 1/2" X 8"
CODE	SIZE	CODE	SIZE										
<b>ACJB1</b>	2" X 4"	<b>ACJB3</b>	2 1/2" X 6"										
<b>ACJB2</b>	2" X 5"	<b>ACJB4</b>	2 1/2" X 8"										
	<p style="text-align: center;"><b>BLACK ACRYLIC BASE</b></p> <table border="1"> <thead> <tr> <th>CODE</th> <th>SIZE</th> <th>CODE</th> <th>SIZE</th> </tr> </thead> <tbody> <tr> <td><b>ACKB2</b></td> <td>2" X 5"</td> <td><b>ACKB4</b></td> <td>2 1/2" X 8"</td> </tr> <tr> <td><b>ACKB3</b></td> <td>2 1/2" X 6"</td> <td></td> <td></td> </tr> </tbody> </table> <p style="text-align: center;">BEVELLED EDGES 3/4" THICK</p>	CODE	SIZE	CODE	SIZE	<b>ACKB2</b>	2" X 5"	<b>ACKB4</b>	2 1/2" X 8"	<b>ACKB3</b>	2 1/2" X 6"		
CODE	SIZE	CODE	SIZE										
<b>ACKB2</b>	2" X 5"	<b>ACKB4</b>	2 1/2" X 8"										
<b>ACKB3</b>	2 1/2" X 6"												



**HDAC 001**  
METHYLENE CHLORIDE  
FOR CEMENTING TOPS TO BASES



**HDAC 003**  
"BUMP ON" BASE PADS, CLEAR, SELF-ADHESIVE &  
NON-SLIP FEET - 144/SHEET



**HDAC 002**  
SYRINGE FOR APPLYING ADHESIVE

**GOLFER, MALE**

CODE	SIZE
RF00090PL	8 ½"

**GOLFER, FEMALE**

CODE	SIZE
RFF0090PL	8 ½"

**DOLPHIN**

CODE	SIZE
RF00092PL	9 ½"

**EAGLE**

CODE	SIZE
RF00091PL	10 ¼"

**HORSE**

CODE	SIZE
RF00093PL	10 ¼"



### RED MIST PLAQUE PLATES

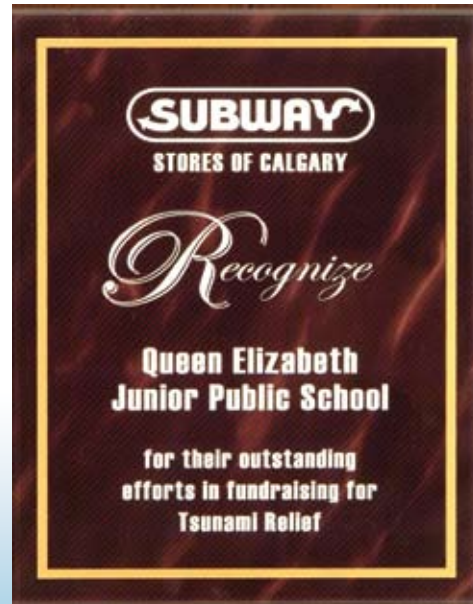
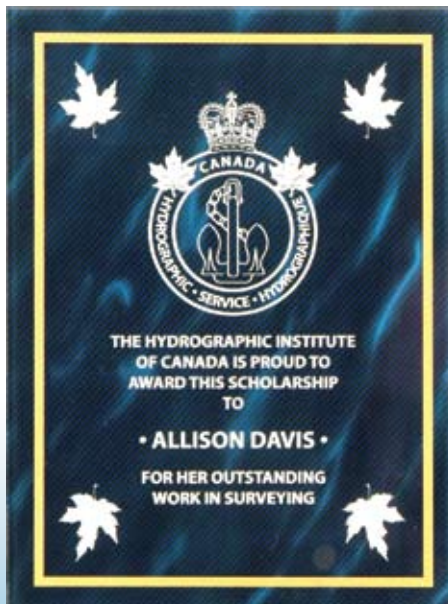
CODE	SIZE
ACPL004R	5" X 7"
ACPL005R	6" X 8"
ACPL006R	7" X 10"

### BLUE MIST PLAQUE PLATES

CODE	SIZE
ACPL004B	5" X 7"
ACPL005B	6" X 8"
ACPL006B	7" X 10"

### GREEN MIST PLAQUE PLATES

CODE	SIZE
ACPL004N	5" X 7"
ACPL005N	6" X 8"
ACPL006N	7" X 10"



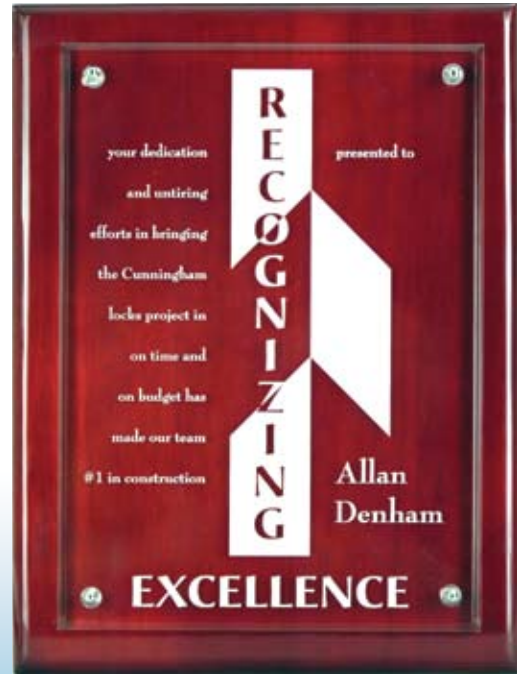
### BLUE MARBLEIZED PLAQUE PLATES

CODE	SIZE
ACPL001B	5" X 7" X 1/8"
ACPL002B	6" X 8" X 1/8"
ACPL003B	7" X 10" X 1/8"

### RED MARBLEIZED PLAQUE PLATES

CODE	SIZE
ACPL001R	5" X 7" X 1/8"
ACPL002R	6" X 8" X 1/8"
ACPL003R	7" X 10" X 1/8"

PRICE INCLUDES WHITE ADHESIVE MOUNTING PAD ON ALL PLAQUE PLATES



### REGENCY PLATE

CODE	SIZE
ACPL357	5 1/2" X 7 1/2" X 1/4"
ACPL369	6 1/2" X 9" X 1/4"
ACPL3710	7 1/2" X 10 1/2" X 1/4"

NAILS ARE INCLUDED

### SAMPLE OF ACRYLIC PLATE MOUNTED ON PLAQUE



### RED ACRYLIC PLAQUE

CODE	SIZE
ACPL279R	7" X 9" X 3/8"
ACPL2810R	8" X 10" X 3/8"
ACPL2912R	9" X 12" X 3/8"



### BLUE ACRYLIC PLAQUE

CODE	SIZE
ACPL279B	7" X 9" X 3/8"
ACPL2810B	8" X 10" X 3/8"
ACPL2912B	9" X 12" X 3/8"

PRICE INCLUDES WHITE ADHESIVE MOUNTING PAD ON ALL PLAQUE PLATES



### JADE AZTEC

CODE	HEIGHT	SUGG BASE
89346-J	6"	ACJB3
89347-J	7"	ACJB3

### JADE PEMBROKE

CODE	HEIGHT	SUGG BASE
ACJ42A	6"	ACJB2
ACJ42B	7"	ACJB2
ACJ42C	8"	ACJB3



CODE	HEIGHT
ACSNAP-3	6¾"

CODE	HEIGHT
ACSNAP-2	6½"

CODE	HEIGHT
ACSNAP-1	6¾"

**CLEAR SNAP-IN ACRYLIC TOPS AND BASES ARE SOLD TOGETHER**

